



Beaver's Funday  
at Gilwell

Cub's outing  
to York  
included the  
Railway  
Museum



Scouts  
at Abington,  
firefighting

An  
Explorer Scout  
parascending



# CAMBRIDGESHIRE COUNTY SCOUT COUNCIL

Reports from members of the

COUNTY TEAM

for the

ANNUAL GENERAL MEETING



## Index

### Page No.

3 - 5	Setting the Scene, photographically
	<u>Reports</u>
6	County Commissioner's
9	County Chairman's DCC (Youth Programme)
10	Beaver Scouts
11	Cub Scouts
12	Scouts
13	Explorer Scouts
14	Queen's Scout with D of E Gold Awards
15	Scout Network
16	International
17	Duke of Edinburgh Award Creative Activity
18	Campsite
19	CamJam
20	DCC Adult Support Special Needs
21	Fellowship
22	ACC Development
23	Friends of Cambridgeshire Scouts
24	Awards ACC Child Protection
25	DCC Adult Training
26	DCC Communications

I recently launched the County Young Spokespeople team and have been really pleased with the results. Explorer Scouts, Gemma Douglas (Phoenix Unit, Cambridge) and Adam Tyler (Hinchingsbrooke) together with Simon Gates and Chris Gawthrop-Bleet attended training in January and have returned with some great ideas. You may have seen their display at the County PRIZE Day which was really good. They are radio trained and keen to act as spokespeople for events and activities. Also they are looking to promote Scouting in shopping centres, helping to write better press releases and taking much better photographs.

It is my intention that we establish a Media Development Manager and Young Spokespeople in every District and where possible Scout Group's as well. We need to bombard the press with good news about Scouting and the more the merrier!

We have also been out and about with Scouting displays and activities and when we do the results are excellent in terms of new volunteers and recruitment of young people. We have done well at Anglia Ruskin University, Homerton College, Littleport Show, Wisbech Horse Fair, Morrisons at Cambourne and Cambridge University Rag Volunteering Fair. Districts and Scout Groups are beginning to use the County display material for events such as the Peterborough Gang Show, Crafts Hill Explorers Survival weekend, Cromwell Beaver Craft Competition, Witchford Beaver Colony launch and Warboys Scout Troop launch. This year we are planning to be in Queensgate Shopping Centre, at Soham Carnival and in Cambridge City Library.

Perhaps the biggest barrier to effective communication is the accuracy of our membership records and contact lists. Pete Edwards has done a fantastic job to get the Cambridgeshire records to the state where (according to HQ) they are amongst the best in the UK. Thanks to Pete, we now have a credible database from which to mail and email some 1,200 adult volunteers in the County and accurate address and email lists that are regularly updated. As an example of this work, Pete has added 300 new email addresses to the County circulation list this year. That is 300 more adults that are now better in touch with what is going on.

In addition, all adults working in Scouting are now able to access and maintain their own records on this database which will make maintenance more effective and efficient. If you would like to know more about this, please contact Pete Edwards.

Finally, the more of this communications stuff we do then the more volunteers and young people we will recruit into Scouting. I would urge you all to get out there and Shout for Cambridgeshire Scouting. Let me know if you need any help.

*Chris Ward*

## County Communications Team Deputy County Commissioner (Communications) Report

I believe we have made encouraging improvements to communications, both internally and externally during the year. We are a small but expanding team and I am very pleased with the way we have worked together this year on the many facets of communications.

In January, I launched OnRecord, a new County Scout Magazine. This will be mailed twice yearly to all adult volunteers and supporters in Scouting together with those organisations and businesses that may be willing to help us. OnRecord was designed and put together by Simon Gates, Beaver Scout Leader 12<sup>th</sup> Cambridge and County Young Spokesperson. I am sure you will agree he has done a great job.

Michael Nurse has edited six issues of Noticeboard during the year all packed with information about Scouting in the County. It is currently available on the website and is posted to more than 300 leaders that have requested it. The distribution is managed by Val Hayden and you will appreciate this is no easy job. I would like to mail Noticeboard in the same way as OnRecord but to do this I will need support from Districts and volunteers to help prepare the mailings. Thank you to Michael Nurse and Val Hayden for their hard work in making Noticeboard happen this year.

The County website [www.cambridgeshirescouts.org.uk](http://www.cambridgeshirescouts.org.uk) was set up during 2005 by James Smith. It is a very effective communications medium and particularly as a way of promoting Scouting to the outside world. Since September 2005 we have received some 150 enquires from prospective members (mainly Beaver Scout parents) and 40 from potential adult volunteers. These are all passed onto Districts to support volunteer recruitment and growth.

Although the website content is up to date a much bigger team of volunteers is need to keep it so. I have begun to widen editorial access and will continue this during 2006. If you would like to volunteer to help with the website then please let me know. Thank you to James Smith for his professional approach to the site's development.

There has been lots of press coverage about Scouting during 2005 and we now have a much more coordinated approach to this across the County. Media Development Managers are in place for Cromwell, Medehamstede, Nene and Newmarket. In addition Chris Gawthrop-Bleet, Beaver Scout Leader 14<sup>th</sup> Cambridge, has agreed to become the County Media Development Manager. Manda Lusmore in Cromwell and Simon Gates, Cambridge attended media training in November and more sessions are planned. Please let me know if you would like to take part.



Gathering outside  
the Maltings, Ely



Watching the "experts"  
on the climbing wall



## County Training Team Deputy County Commissioner (Adult Training) Report

Cambridgeshire Training owes a large vote of thanks to John Duley for all the work he did in training and building a firm foundation for the new modular system in the county, thank you and we wish him all the best in his new role of County Commissioner for Bedfordshire.

2005 has proven to be yet another year of achievements for training with over 56 courses run across the county taking in 600 participants representing all sections and support within the scout movement, both warranted and non-warranted adults and 20 Wood Badges presented.

This year we have seen changes to the training team with the appointment of Jane Warren as Local Training Manager for Cromwell/Hinchingbrooke (Zone 2), Jill Hallas as Local Training Administrator for Cambridge/Craftshill (Zone 4) and Adrian Moore to the First Aid team. We wish all of them every success in their new roles. Although we have filled two roles we are still looking for a Local Training Manager for Cambridge/Craftshill (Zone 4) and a Local Training Administrator for Cromwell/Hinchingbrooke (Zone 2). These are important roles to ensure that our leaders get a good start with their scout training. Also new to the team is John Lattimore (Training Manager) who will look after all training not covered by the Local Training Managers.

We have seen some new initiatives developed by the training team such as the drop-in-day and events to enable leaders to complete course validation, undertake computer based training, complete a personal learning plan or just speak to a member of the training team for advice and guidance. All this in one go at the leaders' convenience - 'training to meet their needs'. In addition we have introduced a team of Training Advisers to support new leaders through the Getting Started induction training and one-to-one training for prospective Training Advisers instead of courses.

Beryl Dougal and her team continues to provide excellent training in first aid across the county covering First Response and Practical First Aid for leaders requiring more advanced first aid for adventurous activities.

To the Local Training Managers, Training Manager, Local Training Administrators and the training team, thank you for all your time and commitment that you have given to training over the last year and I look forward to continuing to working with you in the years to come.

*Chris Halliday*

The assembled gathering inside the hall, listening to the County Commissioner's presentation.



From left to right  
the Deputy Chief Scout  
Peter Nichol  
the County Commissioner



H M Lord Lieutenant  
Hugh Duberly, CBE



Our  
County Commissioner  
Richard Hames

## Awards for Good Service Assistant County Commissioner (Development) Report

Congratulations to those who have received formal recognition of good adult service this year.

Most of the adults involved in Scouting look for and expect no reward, but a timely word of thanks in the right direction never goes a miss and can work wonders in terms of morale and motivation not to mention retention.

Applications for awards can be submitted at any time of the year. Those to be considered for St George's Day 2007 need to be with us by the end of September 2006.

Make that thank-you something special.

*Terry Izzard*

---

## Child protection County Child Protection Coordinator Report

I have been involved with Cub Scouts in Cambridge since 1977, helping at the 26th Cambridge, 1st Willingham and 1st Cambridge packs as my husband and I moved around the area.

Following an extended break to look after our two daughters I returned to Scouting in 1999 and joined the 18th Cambridge Cub Pack and became 'Akela' when my predecessor moved to America.

My new role as Child Protection Coordinator is in an advisory capacity rather than a warranted position. Following my training in February 2006, I am looking forward to promoting good working practices for both children and adults involved in Scouting in Cambridgeshire.

It was nice to have the opportunity to meet so many people at the County PRIZE Day at St Ives and I have also asked to be invited to your District meetings over the next year in order to meet more leaders. I have also offered my help on some of the training modules (i.e. Nights Away).

If you have any concerns regarding Child Protection that you would like to discuss then please contact me on 01223 355805 or via email: [rebecca.miller@cambridgeshirescouts.org.uk](mailto:rebecca.miller@cambridgeshirescouts.org.uk)

*Rebecca Miller*



The Deputy Chief Scout  
Peter Nichol  
presenting warrants to:

Assistant  
County Commissioner  
(Beaver Scouts)  
Sue Best



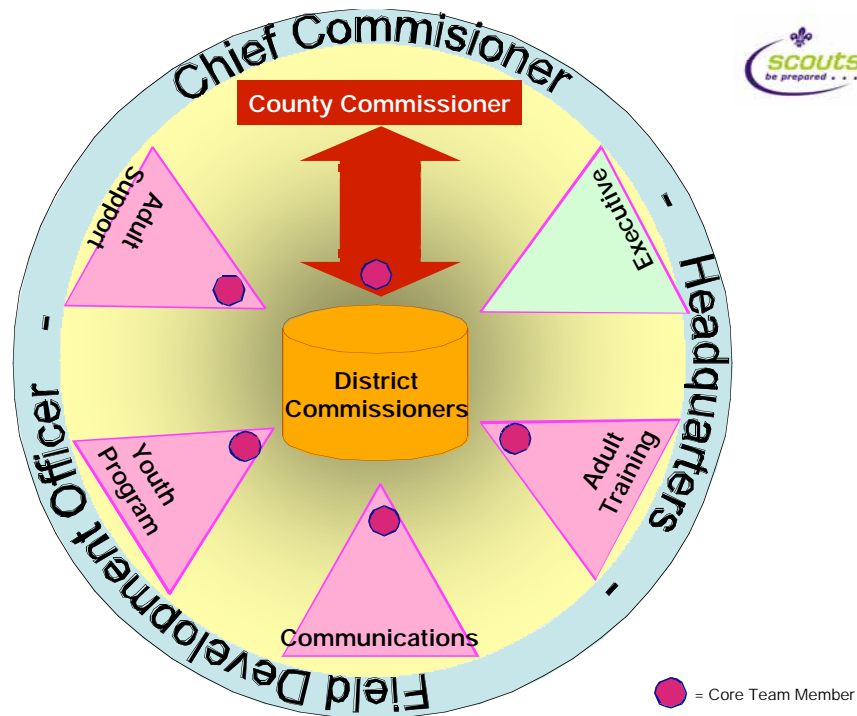
County Scout Network  
Commissioner  
Jon Dearden



County Child Protection  
Co-ordinator  
Rebecca Miller

## County Commissioner's Report

### Structure



Last year I announced a very different structure of County appointments to best meet the needs of Cambridgeshire Scouting. I have been very pleased at the way this structure has worked and got to grips with the various roles much quicker than any of us thought.

Thanks to the dedication, commitment, hard work and sheer enthusiasm of the County team, District Commissioners, County Executive and you the leaders on the ground we have been able to accomplish more in this first year than we anticipated. As I stated this is a two year plan and we are well ahead of where we expected to be.

Continuous Recruitment was a theme I also highlighted and one I mention at many meetings, it is the cornerstone of much we do in many guises and also a significant part of today's meeting.

## Friends of Cambridgeshire Scouts Coordinator's Report

Since the idea of approaching industry, to find out whether organisations would be interested in becoming involved with Cambridgeshire Scouts, was announced by the County Commissioner at the last Annual General Meeting, several developments have taken place.

Positive meetings with The County President and HM Lord Lieutenant for Cambridgeshire, Hugh Duberly CBE, have taken place. He has given his full support behind the idea of approaching different commercial organisations to support Cambridgeshire Scouting

The first move was to sign up as members of the Cambridgeshire Chambers of Commerce. They have announced our membership in their monthly magazine and that has given us a very good initial exposure to Cambridgeshire industry.

A business focussed flyer has been designed and printed to support our marketing effort. This important leaflet has been used at different meetings of the Chambers of Commerce, which we have attended. The Chambers of Commerce arrange free networking meetings in several hotels around the County and it is our intention to be at these meetings, when it is possible to attend. Contacts at these meetings are being recorded in a database, so the companies can be followed up from time to time.

A good example of the impact of this initiative is the response from East Anglian Computer Services (WACS Ltd. or [www.eacs.com](http://www.eacs.com) for those of you who might be interested in their activities) donated two fine prizes to the County. A multi-function fax, scanner and copier was used at the County PRIZE day at St Ivo School and the other prize will be used shortly!

In the coming months we will continue to make contact with representatives of the members of the Chambers of Commerce – many have been Scouts! The leaflet will be used whenever possible as it gives some one the possibility of signing up to become involved with sponsorship or other ways of helping Cambridgeshire Scouts.

*Tony Bell*

## County Development Team Assistant County Commissioner (Development) Report

Another successful year for Scouting in Cambridgeshire where more young people have been given the opportunity to try the game of Scouting, our team has encouraged and supported development across the County where Districts have requested help.

One of our task areas Richard Hames outlined for us was to encourage growth in the Beaver section. We are pleased with the success story here, but there is still much to be done.

Jackie Daniels has taken six steps out into various Districts explaining the workings with the view that Districts will give it a go. It has a good track record.

Colin Daniels has taken on the role of acting District Commissioner for Cambridge and Tony Bell continues his work of one to ones with Group Scout leaders. We also welcome three new members to our team Sheila Lattimore Assistant District Commissioner (Development) Fenland, Steve Taylor District Commissioner Newmarket as the District Commissioner representative, and Ron Ward, Assistant County Commissioner (District Support) working in the Peterborough area.

The County PRIZE Day last March was a great success where some 200 leaders just popped in or stayed longer to seek out new ideas from the many exhibitors and enjoyed a chat over a cup of tea.

Last Autumn another Group Scout Leader conference took place in the North of the County and follow up evenings will be taking place later this year. Full details will appear in Noticeboard.

The County Development team will continue to meet on a monthly basis and we are keen to support Districts on a variety of projects that will help more young people and adults the chance to try the Scouting experience.

My thanks to Jackie Daniels, Colin Daniels, Tony Bell, Sheila Lattimore, Steve Taylor, Ron Ward and of course our Field Development Officer, David Walsh for their hard work and support throughout the year.

*Terry Izzard*

I also stated last year that I wanted to see Scouting in Cambridgeshire:

- Active
- Growing significantly year on year
- Highly visible throughout the whole community
- Well supported
- Well funded

After just twelve short months I think we can say we have done much of this and what remains is well planned and underway.

County visibility in Districts is very important and I recently asked every District Commissioner what specific support they wanted in their District; I also asked each ACC to contact their respective colleagues in each District regarding the support they needed and to ensue that this was happening.

### **Census 2006**

I was pleased to report in Noticeboard recently that our membership in Cambridgeshire has increased over 2004/05, whilst this was only by 1% it is a change from recent years and reflects some of the work many people have been doing.

With planning and a bit of application this year three Districts were able to grow by 4%, 6% and 8%. Most Districts can realistically grow by 5% a year and in fact if we do not increase by 2.4% we are not keeping up with the population growth in the County.

Each District now has a target by which to grow over the next twelve months and I confidently expect many Districts to beat this.

### **Development**

The development team have done a brilliant job of supporting Group Scout Leaders around the County, the new initiative of a County PRIZE Day was another success and we still have CAMEO to come! The committee target and help with specific issues in the Districts and can make a real impact locally, make sure your District is taking advantage of this valuable resource.

### **Communications**

You should all have received a copy of the new 'OnRecord' magazine, the next issue will be with you early in the new Scouting year. Noticeboard, the web site ([www.cambridgeshirescouts.org.uk](http://www.cambridgeshirescouts.org.uk)) and the HQ Membership Services System have all taken a huge leap forward over the last twelve months and again I thank the commitment and dedication of the leaders involved.

## Support

One of the County's roles is to support and assist specific areas. One area we have had a high degree of concentration on, with HQ assisting us, are the two Peterborough Districts. This has been to help Martin Hall develop and recruit District teams and get both Medehamstede and Nene Districts to a point where they work more effectively in providing support to their Groups. There have been a number of meetings which many leaders attending and we feel that after a challenging period we are starting to see the benefits of this.

## County Executive

The County Executive has seen a number of changes in the way it does business, some of which will be evident at the AGM. The executive will continue to change to best meet its role in supporting the leadership in the County and will also be proactive in specific areas. The link with the Chamber of Commerce, in particular is proving fruitful.

## Girlguiding UK

Over the last year I have held meetings with the local Guide Commissioners and we will continue to do so and work together where there is a benefit to both organisations.

## Presentation Event

Last year I announced that we will be holding a Top Award presentation event for all sections. The first such event is to be held on Sunday 19<sup>th</sup> November at The Holiday Inn, Thorpe Wood Peterborough. DCs will soon be contacted by a sub-committee that has been formed to coordinate the event and collect names of all those entitled to receive a special certificate and memento of the presentation. We hope several hundred young people will attend, along with their parents, leaders as well as recipients of some adult awards.

## Gold Scout Mate badge

Tonight I am also announcing a new County badge. This is to encourage development within Groups and specifically recruiting new adults, this is part of my support to Districts and Groups towards their growth targets.

It is an award to recognise the active recruitment of new adult volunteers. It can complement the six-step plan and can be achieved by a Section taking part in three activities to encourage volunteer recruitment and be successfully recruiting someone! Sections may join together to do the activities but each section must successfully recruit a new volunteer to Cambridgeshire Scouts in order to gain the badge.

Full details of this new and exciting badge are available on our web site and will be published in the next County newsletter.



## FELLOWSHIP REPORT

2005 - 2006 saw a change in leadership, Martin Bignall resigned and Sarah Thurley took up the challenge. The Fellowship has had a very successful year both socially as well as supporting the young people at various district levels. There are now 7 Fellowships with about 150 members, with a mix of both warranted and non-warranted adults.

**Newmarket** Fellowship once again hosted the annual fellowship quiz in February and for the seventh year in succession Crafts Hill won. Some members helped at a charity ball, clearing tables, helping at the swimming gala and the Beaver Fun Day. They also support three groups within the district where leadership is a bit thin.

**Crafts Hill** supported the district at the annual St George's Day, marshaling young people safely around the village of Over, whilst on a quiz, before the outdoor service held at the village centre. They also had the hot dogs and chocolate ready after the annual night hike in November. Also helping in the Cambridge swimming gala.

**Cambridge** organised a fun challenge evening in October, the prize being a rolling pin. This was well supported by both Network Scouts and the various fellowships; a very enjoyable evening was had by all. Cambridge also organised the swimming gala with 28 teams taking part.

**Fenland** supported both the annual Remembrance Day service, the Carol service and the St George's Day service where the new District flag was dedicated.

**Ely** Many attended the Gilwell Reunion in September, likewise supporting St George's Day, and helping with camp cooking at the Beaver sleepover.

**Medehamstede** were actively involved in the Gang Shows, organising the Cub swimming day and assisting at St George's Day.

**Cromwell** organised the refreshments at the PRIZE Day, assisted at the Heart Foundation fun run and the Beaver's sausage sizzle.

It should be noted that the events listed above are only a summary.

**CamJam** Some fellowship members will be helping at various activity bases.

I'd like to thank all the fellowships for all their hard work supporting the districts; I know this is very welcome. Thanks also to the County Adviser, John Chambers for his advice and support, not forgetting Rosemary for her excellent administrative support.

*Di Wisbey.*

## County Adult Support Team Deputy County Commissioner (Adult Support) Report

My first year as Deputy County Commissioner (Adult Support) has been challenging and very enjoyable, meeting up with Scouting friends both 'old and new' across the County.

Our County Commissioner asked for our help with his vision for Scouting in Cambridgeshire.

To help with Beavers, an area where we always seem to have waiting lists, looking at established groups where no Beaver Colony exists. Also looking at the National Census to see where the need for Scouting will be, and with a little bit of effort from us all, we will achieve Richard's target for growth.

Hopefully we have given active support to groups who have specifically asked for 'our help' and continued to be there until the job is complete. PRIZE Day gave us a great opportunity to chat to many leaders about this.

The Development Team meets monthly under Terry Izzard's chairmanship, to whom I am very grateful, for his experience and guidance, obviously not forgetting 'the Team' where there is a wealth of Scouting knowledge.

As of the 2006 census there were 1,291 adult volunteers in Cambridgeshire Scouting (2005: 1,275).

The year has been great fun.

*Di Wisbey*

---

## Special Needs Deputy County Commissioner (Adult Support) Report

Although there is no one in the post of Assistant County Commissioner (Special Needs) at present, if you require help in any area please do not hesitate to contact me, on the telephone: 01223 232403.

I feel sure that if I cannot help I know someone who can.

*Di Wisbey*

## The Future

Looking ahead things are only going to get better and in many cases busier. Soon we have CamJam which is lining up to be a really special event with many new ideas. There is the leaders conference in Warwick, the presentation event and then we are into 2007. The Centenary will see a whole year of celebration, activities and the opportunity of our lifetimes to shout about Scouting, recruit more members and develop our movement further to the benefit of more young people.

I thank you all for the work you have done over the last twelve months and look forward with excitement to the year ahead.

*Richard Hames*

---

## Chairman's Report

I have observed the past year as one of considerable change in both county appointments and activities, both positive.

The energy of Richard Hames has encouraged and advanced scouting in Cambridgeshire.

The county executive committee has increased its efforts to monitor county finances in order to achieve a strong and controlled financial base.

The much needed improvements at Abington will be high on the 2006 agenda's.

The executive committee will continue to provide trustee support to county.

*Lawrence Noble.*

---

## DCC (Youth Programme)

Reading through the following reports from the Youth Programme Team highlights the impressive activities and support Young People and their Leaders involved in Cambridgeshire Scouting have enjoyed over the past 12 months.

We thank Jane Carter who stood down from ACC (Beaver Scouts) at the end of 2005 and welcome Sue Best to the team who has eagerly taken on the post.

Many thanks to the team who are working hard to develop Scouting into 2007 and beyond.

*Phil Garrett*

DCC - Youth Pro-

gramme

## Cambridgeshire Beaver Scouts Assistant County Commissioner (Beaver Scouts) Report

Since taking on the role of Assistant County Commissioner (Beaver Scouts) in January 2006, I have heard about and seen a variety of District and Colony activities including handicraft competitions, cyclo-cross, fun days and outings. Some Districts seem to be very active, whilst a few have no programme at all, an issue which needs exploring as I get into the role.

Although not a compulsory part of the Beaver Scout programme, Sleepovers are becoming increasingly popular, with some being run by Districts and others by individual colony leadership teams. As more leaders gain their Nights Away Permits, and those already experienced share their enthusiasm, I hope the trend will continue to grow.

460 Beavers, supported by around 180 adults enjoyed a range of indoor and outdoor activities following an Ice Age theme at the County Beaveree at Cottenham in July 2005. Some research is required into why there has been a gradual decline in numbers attending to make sure that as a County we are providing the right kind of activity to support the leader's weekly programmes.

The Annual Census has indicated that there are at least 420 youngsters waiting to join in colony activities. With the support of the County Development team, since January 2006, four new colonies have already opened and more are in the planning stage. For those still waiting we need to explore our local provision to see where we can effectively reduce this figure.

I was very impressed with the size and impact of the Beaver Section presence at PRIZE day and would like to take this opportunity to say thank you to all the District and colony leaders who helped to provide the displays and an impressive array of programme ideas. And finally, I would like to say thank you to all of the leaders who have already made me feel welcome in my new role.

As of the 2006 census there were 1,340 Beaver Scouts (2005: 1,356) including 102 girls.

*Sue Best*

## CamJam 2006 Chairman's Report

Work has progressed well throughout the year preparing for CamJam 2006 and with a change of venue to Huntingdon Racecourse this has brought new, but achievable challenges for the Management Team. The Racecourse staff have all been helpful and co-operative. We are working together with the intention of Scouting being able to use the site in future years, not only for CamJam, but the possibility of staging other Sectional activities.

CamJam 2006 will be held from Sunday 6<sup>th</sup> to Sunday 13<sup>th</sup> August 2006 and the Management team, which comprises of several new faces from 2002 has met monthly throughout the year developing plans to ensure participants will enjoy numerous activities from first thing in the morning until after the sun has gone down.

For further information visit the website: <http://www.camjam2006.ukf.net/main.htm>  
Email: [camjam2006@ukf.net](mailto:camjam2006@ukf.net) or Telephone: 01487 711366

*Phil Garrett*

## County Campsite Assistant County Commissioner (Campsites) Report

The Abington Appeal which was launched just over twelve months ago is unfortunately going very slowly and has been very disappointing but it is still on-going with various charities still coming to look over the site. Work is still going on at the site although some jobs have been put on hold on the present building.

I would like to thank all the groups that have worked on different weekends during the course of the past year doing some excellent work. My special thanks to the following groups: 1<sup>st</sup> Cambridge Guides, 16<sup>th</sup> Cambridge, 1<sup>st</sup> Whittlesford & Duxford and the Cambridge Scout Network Unit.

We have put up a new campsite sign at the entrance and have now removed the pay-phone as it was not being used, supposedly due to the fact that most people have their own mobile phones.

The campsite fees for this year have been frozen but it is likely that we will need to increase charges next year. Unfortunately we have had a big expense – the cost of removing three trees that have become dangerous with disease.

I am sorry to report that some groups' camping standards have dropped since the Campsite Inspection Form was dropped but some groups' standards are excellent.

Once again bookings have been good with the site being used nearly every weekend. We have had once again some new visitors to the site coming from long distances, a good number of schools' Duke of Edinburgh Award groups and various other organisations.

The Management Committee has met one Saturday a month and at other times to undertake work on the site. Again I know how busy people are but we are always looking to receive offers of help from any groups or individuals who can spare some time to help out. If you would like to help out or undertake a special project at anytime please contact me. Like the old proverb says "Many hands make light work"- so any help would be appreciated.

We are also looking for more people to act as Camp Wardens at weekends. Again please contact me if you are able to take on this task. It involves seeing groups into and off the site and being available at the end of a phone at least to answer any queries groups may have during the weekend. If you fancy a weekend at the campsite there is a Warden's room available (all mod-cons and TV)!

Last but not least I would like to thank and pay tribute to the members of the Management Team for all their hard work over the past twelve months, without them the site would not function.

Many thanks once again to everybody for their support.

*Barry Wallman*

## Cambridgeshire Cub Scouts Assistant County Commissioner (Cub Scouts) Report

This year I would like to begin my report with the thank you to all those that have been involved in the Cub Scout section in any way over the last year. There are the Cub Scout leaders, assistants and helpers who week in week out, provide our young people with the Cub Scout programme that they all enjoy so much.

We also have the Assistant District Commissioners and District Cub Scout Leaders who support the cub packs and leaders in their district and facilitate the district events.

I would also like to thank all those that helped at County level in particular the County events. Following County Cub Camp in 2004, 2005 was a relatively quiet year before 2006 in which we are celebrating 90 years of Cub Scouting.

Our only County Cub event in 2005 was the Challenge Day, as usual, held in October. Again demand for places justified spreading this event over two days and just over 260 cubs took part in nine activities including climbing, canoeing, archery, fire lighting and cooking, orienteering, first aid, an aerial runway, a ballista and a team challenge. This is always a splendid event that the older cubs enjoy and due to popular demand will again be taking place in 2006. Those that put on the activities worked hard over the two days to ensure that the Cubs had a great time and many also put in long hours in preparing activities for the event. We must not forget our first aid team that not only provided an activity for the event but also the first aid cover for the event.

Looking ahead, as I mentioned earlier, 2006 is going to be a much busier year for the Cub Scout section. In addition to the Challenge Days in October we have a 90<sup>th</sup> anniversary trip to York, which by the time you read this report will have taken place.

We have chartered a GNER train for 500 cubs and leaders who will visit the National Railway Museum and one of the other York attractions. They had a choice from the Castle Museum, Jorvik Centre or the York Dungeons. Every pack made their choice but cubs being cubs nearly half of them will be going to the Dungeons!

Some will also take a revolution on the Norwich Union Wheel, a new attraction in York, a smaller version of the London Eye, which opened in April.

Finally, in August we are holding the first Cub Scout day at Camjam, which will give an opportunity for up to 300 Cub Scouts to experience what happens on an international scout camp.

Between all this the various districts will be fitting in events and camps and packs will be doing likewise. As usual it will be an active and varied year for Cub Scouting which is what attracts the young people to the section.

As of the 2006 census there were 1,918 Cub Scouts (2005: 1,983) including 137 girls.

*Nigel Poulter*

## **Cambridgeshire Scouts Assistant County Commissioner (Scouts) Report**

During the past year many Districts ran their own successful and exciting events for the Scout section. These were well supported and I was pleased to visit many of them to meet young people and leaders from around the County.

I have also been to a number of Districts for their leaders meeting, providing support to the Assistant District Commissioner (Scouts) and either assisting or listening to leader's views and comments.

The County Activities Competition weekend at Mepal in May 2005 was well run and supported, being fully booked as in other years.

White Water Canoeing at Cardington in June 2005 was a very busy event with many ages attending and some trying the adventure of white water for the first time.

This year also saw a Scout team entered for the first time in the '222' endurance event. A leader was supplied to walk with them and was very impressed with their commitment and determination. The Scouts were well prepared and worked extremely hard.

I would like to thank the members of the Cambridge University Scout and Guide Club for the annual FORWARD event they ran in the Cambridge area in March 2006. Talking to many of the teams all of the Scouts really enjoy the event with some old style incidents and a few new activities.

Finally, I would like to thank the Assistant County Commissioner (Activities) and his team for the events they have supplied for the Scout Section through out the year.

As of the 2006 census there were 1,538 Scouts (2005: 1,477) including 169 girls.

*Arthur Towler*

## **Duke of Edinburgh Awards Scheme. County Adviser for D of E's Report**

Explorer Scouts and Network Scouts in the County are becoming more involved with The Duke of Edinburgh Award Scheme. We have had two recent winners of the Gold Award, and there are several working towards Gold at present. Several District Units are also working on their Bronze and Silver awards.

When it is possible to visit a Unit it is emphasised that it is well worth while starting the Award. The main reason, other than gaining a highly regarded award in civilian life, is that much of the Award work undertaken in the Scouting programme is very similar to that needed to complete the Duke of Edinburgh Awards. Two ticks for one effort, can't be bad!

The Chief Scout's Platinum Award is very similar to The Duke of Edinburgh Bronze Award, The Chief Scout's Diamond Award links to the Silver Duke of Edinburgh Award and The Queens Scout Award links to the Duke of Edinburgh Gold Award.

For those of you who would like to discuss the Duke of Edinburgh Award please contact the County Adviser on 01480 469293 or email: [tonybell@tonybell.free-online.co.uk](mailto:tonybell@tonybell.free-online.co.uk)

*Tony Bell*

---

## **Creative Activities Assistant County Commissioner (Creative Activities) Report**

2005 was a quiet year for creative activities in the County although 2006/2007 is expected to be better if plans go well for an event in 2007. All three Gang Show producers met recently to discuss how to take this forward.

*Rob Farrington*

## International Scouting Assistant County Commissioner (International) Report

Once again 2005 saw a number of groups from Cambridge going abroad. Slovenia and Iceland were amongst the destinations. Europe too played host to some of our members.

Report backs on trips abroad are few and far between and it would be useful to see this improve. The 26<sup>th</sup> Cambridge had a very successful visit to Slovenia and the parents evening, showing slides of the trip, was light hearted but demonstrated the value of travel and the spirit of Scouting abroad. Hopefully this year we will see more in terms of written reports on trips and I am always happy to attend any presentation on expeditions abroad.

Eurojam, which was almost on our doorstep, dominated the year. I am sure this will be well covered in a number of reports but Cambridgeshire supported the event in both the participant and staff arena. I too was there and was quite overwhelmed by the air of excitement that hung around Hylands Park and every one I spoke to both British and foreign seemed to be having a great time.

Cambridgeshire is also well represented on the wider international stage with interests in a number of National initiatives. The Russia Fellowship has contact through Peterborough and more recently Jane Warren has participated in a conference regarding wider co-operation with the Arab Scout Region. I maintain a continuing interest in the UK-Africa Scout Fellowship and will be in Africa in May visiting the regional office in Nairobi and then going on to Malawi to work on developing contacts with that country. In 2006 I hope we will see the further development of a Slovenia Scout Fellowship. An initiative driven by Brian Richmond, this will form part of the wider Eastern Europe Fellowship and will help formalise contacts within the country and forge future co-operation with both associations.

This coming year will see a number of events with an international flavour. CamJam in August looks to being a very busy camp with, hopefully, a very active international programme. We also have groups heading of to places like Kandersteg and I will be telling you more about these in the 2006 report next year.

Scouting continues to grow across the Globe. With our 28 million members world-wide the opportunity to travel, meet and make friends is greater than ever. The great benefit of traveling as a Scout, visiting other Scouts, is starting from a common base. This enables you to get straight down to the business of having fun and really getting to know your hosts. So get out those maps and a few pins out and select your destination. If you are unsure about how to put a foreign trip together, get in touch, I am here to help you do just that. If I don't know the answers I know a few people who do. I also have contacts with Scouting in some of the more 'remote' parts of the world so you're your imagination run wild.

*George Devine*

## Cambridgeshire Explorer Scouts Assistant County Commissioner (Explorer Scouts) Report

### **Explorer Scout section membership**

As of the 2006 census there are 344 enrolled Explorer Scouts which includes 262 male and 82 female members. This represents a growth of 16% in total membership from 2005, a growth of 20% in male membership and 5% in female membership. New Explorer units continue to be established, these include the new Crafts Hill units under the guidance of District Explorer Scout Commissioner, John Easy.

### **Young Leader Training**

The Young Leader scheme is active and very successful within the County. Young Leader training is strong in several districts. Cambridge District in particular is very active in this area. Alan Briggs has been running some very successful training days which have been opened to Explorer Scouts from all Districts for a nominal cost. It is hoped that Millennium Volunteers scheme will be a source of incentive and finance for the provision of Young Leader training within the County.

For Districts requiring initial help with Young Leader training, 'Module A training' is covered in the Young Leader Essentials publication. Also available is a 'Module A - In Your Pocket' developed by Norfolk County Explorer Scouts. For Districts that struggle to provide Young Leader training I am encouraging them to join together to pool resources and fill courses.

### **Events and events**

2005 saw many challenging and rewarding events attended by Explorer Scouts from all over the County. The 222 Competition was centered on Horton in Ribblesdale, Yorkshire, taking place on the weekend of Friday October 14<sup>th</sup>. Next year it is hoped that more teams from the eastern part of the County will compete. The dates are 13<sup>th</sup> to 15<sup>th</sup> October 2006.

Cambridge University Scout and Guide Club (CUSAGC) organised an incident hike called Marathon Challenge 2005, which took place on Saturday 29<sup>th</sup> October. Attendance was not as high as was initially hoped; however 30 Young People from Explorer Scout and Ranger Guide Units across the county took part in the nine hour endurance event on the Cambridgeshire – Bedfordshire border.

Explorer Scouts from the Phoenix Explorer Scout Unit enjoyed the Eurojam experience last summer. This included participating in a project called Starburst which was a series of community based projects aimed at leaving a lasting legacy from Eurojam.

120 Scouts and Explorer Scouts enjoyed a busy weekend at Mepal taking part in the County Activities Competition weekend. Participating in a range of activities including archery, air-rifles, climbing, high ropes, cyclo cross, canoeing, sailing, raft building. With only a handful of points separating the top five, Granta District Explorer Scouts were the overall champions.

## Cambridgeshire Scout Network County Scout Network Commissioner's Report

Explorer Scouting continued to offer many challenging and fulfilling expedition experiences for its members. These included trips to Iceland by the 5th Cambridge Explorer Unit and a walking and sailing expedition in the Lake District by the Newmarket Explorer unit. The continuing diversity and adventurous nature of the expeditions offered demonstrates the quality and dedication of Explorer units and leadership teams within the County.

### Building links with the Cambridgeshire Scout Network

Explorer Scout to Scout Network links are being strengthened. Administrative and paperwork systems are being made available to help with moving on process. Explorer Scout and Scout Network section commissioners are increasing the availability of information regarding the Scout Network section. Links have also been established with the network of University Scout and Guide Clubs to provide information to Explorer Scouts that move off to University before becoming Scout Network age.

### Looking forward

2005 continued to see the growth and development of Explorer Scouting in the County. This was made possible by the dedication and support of the leadership teams and Explorer members. I look forward to another year of Explorer Scouting where my main objectives will be to continue the improvement of the moving in moving and on processes; support the good work underway on Young Leader training; improve District awareness of the Explorer section; improve the communication between all Explorer units with the County and encourage increased participation in Explorer activities and events both within the County and Nationally.

*Tim Stopher*

---

### Queen's Scout Award *with* Duke of Edinburgh's Gold Award

This is my 12<sup>th</sup> year as Queen's Scout Coordinator and for the first time Cambridgeshire unfortunately did not have a representative at the Windsor Parade. I am sure that there are many Explorers and Scout Network members working hard towards the Queen's Scout Award in the County; perhaps this due to the change from Venture Scouts to the new sections?

For those of you working towards your Duke of Edinburgh's Gold Award, why not combine this with the Queen's Scout Award. You will be surprised how easy this would be.

Over the next few months I shall be putting an article into County Noticeboard about both the Queen's Scout Award and the Explorer Belt. Take time to check things out, look at the requirements and take up the challenge!

We are celebrating 100 years of Scouting in 2007 and it would certainly be a memorable time to be presented with your Award – if you have any questions, contact me and I would be more than happy to help.

*Jane Warren* Queen's Scout Coordinator

- 14 -

Once again, I can report an encouraging year for Scout Network within Cambridgeshire.

The individual Scout Networks in the four areas of Cambridge, Cromwell, Ely and Wisbech, along with Peterborough are continuing to grow, in both numbers and in the development of the individual members.

The membership on last years census has grown 20%, although that in real terms equates to a jump from 36 to 44 across the county.

Scout Network members have attended many activities across the country as well as throughout the county, carrying on the representation of Cambridgeshire at such events as SunRun and the Gilwell reunion weekend.

There have been investitures carried out "en mass" at SunRun and at Abington the county campsite.

A big thank you must go to the Network members from Cambridge for all the hard work they put in at Abington. This is typically one weekend per month and is on top of their usual Scouting as leaders.

More than two-thirds of the Scout Network members in Cambridgeshire are active as Leaders or Section Assistants with various Scout troops, Cub packs and Beaver colonies. There are also a good number of female members who are active as leaders within Guiding. Keep up the good work; you are the future of both Scouting and Guiding organisations.

Since the District Commissioner's day in February 2006, it has been encouraging that even more Network members have been unearthed (at least another twelve). Thank you to those District Commissioners who forwarded the details. I still believe there are more out there.

Every member of the Scout Association between 18 and 25 automatically qualify as members of Scout Network. Please encourage them to carry on their Scouting, not just as leaders.

Moving forward we are looking to pioneer a specialist Scout Network for Gangshow. This will ensure that the three shows we are privileged to have within the County will continue. Members will learn the skills necessary to produce, direct and perform, along with the technical skills needed to put on a show.

The future's bright, the future's Orange, Red, Green, Purple, Yellow and Cerise. (Cambridgeshire Network official Necker!)

*Jon Dearden*

- 15 -